

MEC SITE INSPECTION

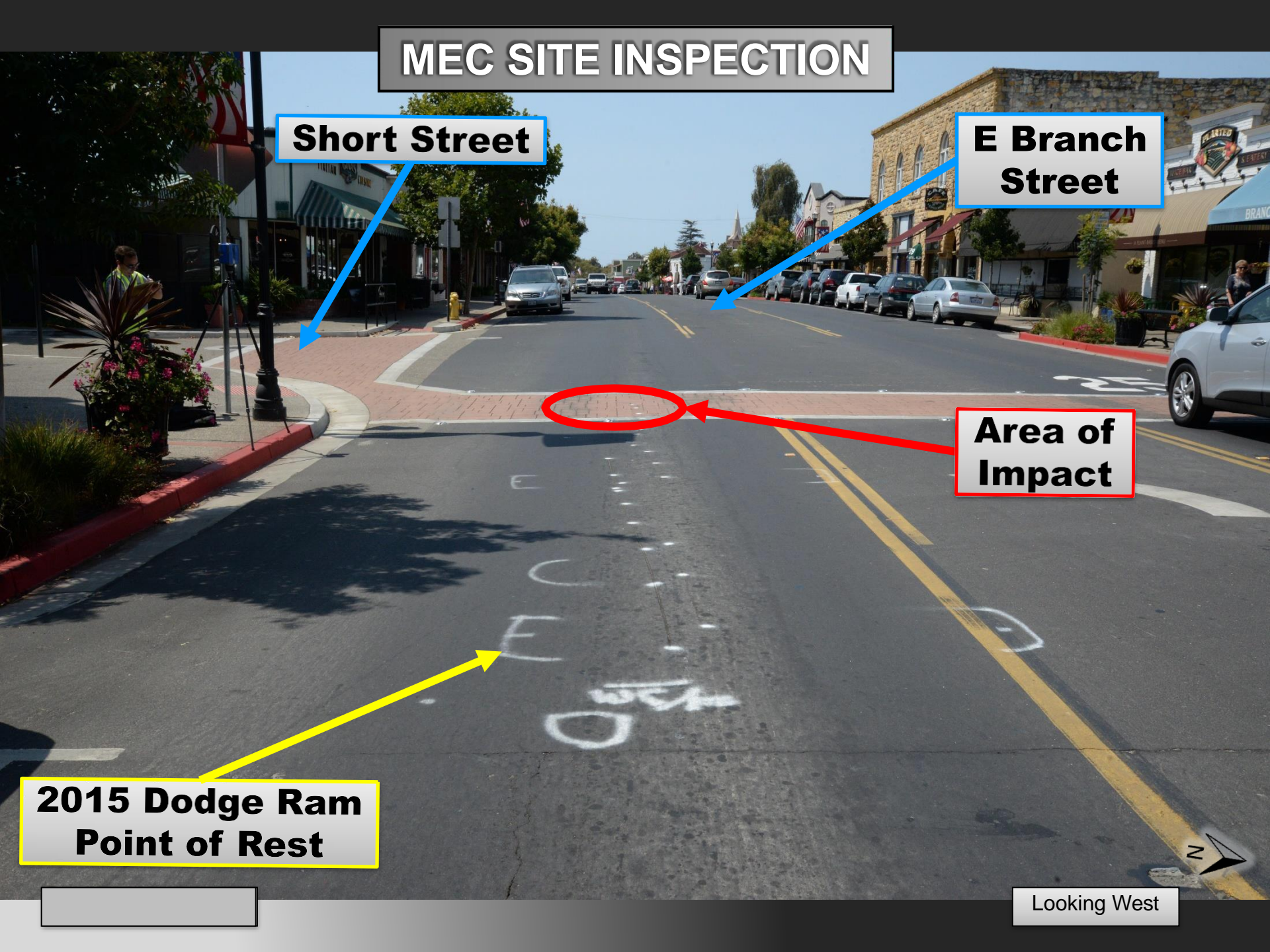
Short Street

E Branch Street

Area of Impact

**2015 Dodge Ram
Point of Rest**

Looking West



MEC SITE INSPECTION

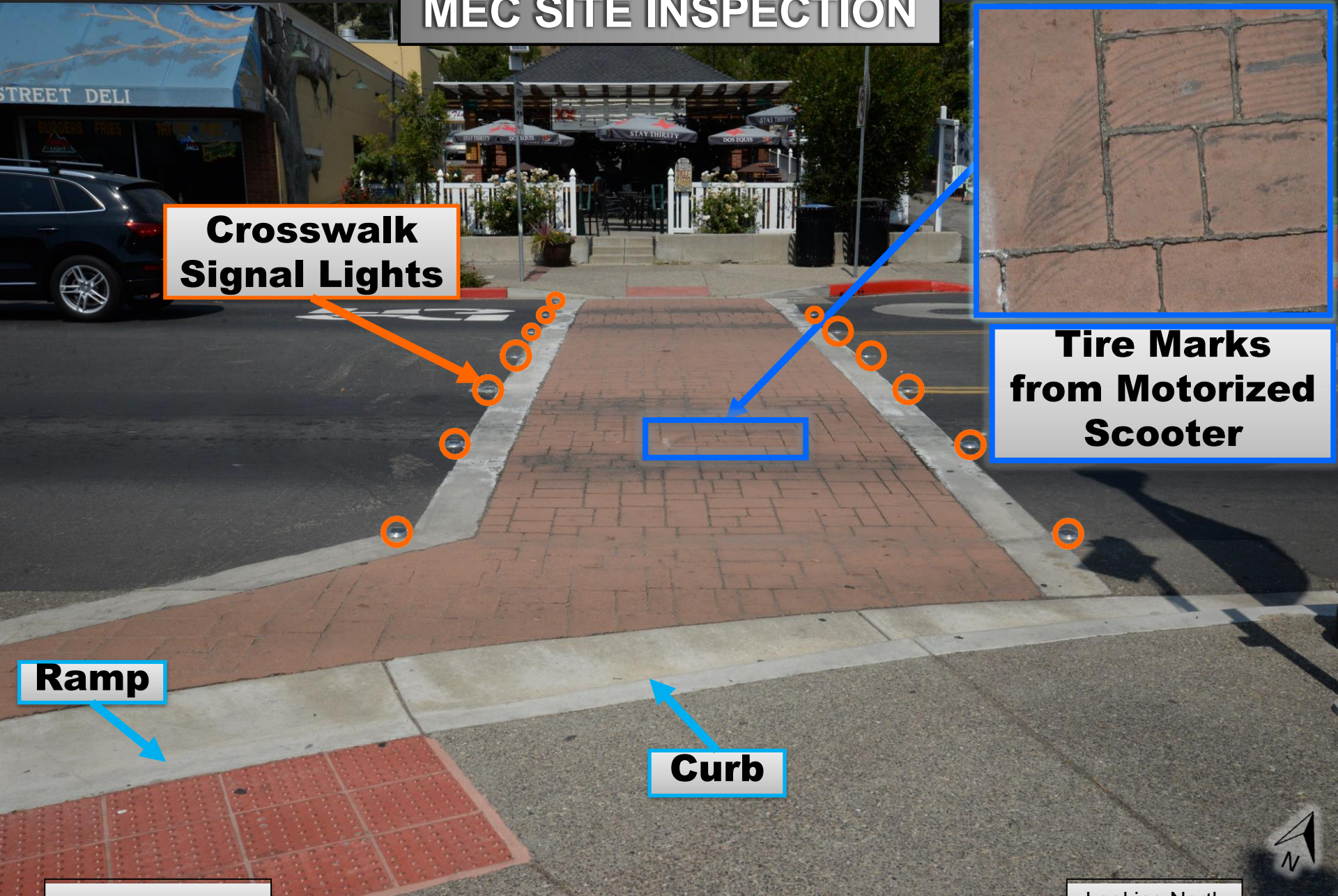
**Crosswalk
Signal Lights**

**Tire Marks
from Motorized
Scooter**

Ramp

Curb

Looking North



MEC SITE INSPECTION



Tire Mark from Motorized Scooter

MEC SITE INSPECTION

**Motorized scooter
Dragged 33.2' feet**

Gouge Marks from Motorized Scooter

Looking East



MEC SITE INSPECTION



**Gouge Marks
from Motorized
Scooter**

Looking East

MEC SITE INSPECTION



**Gouge
Marks
from
Motorized
Scooter**

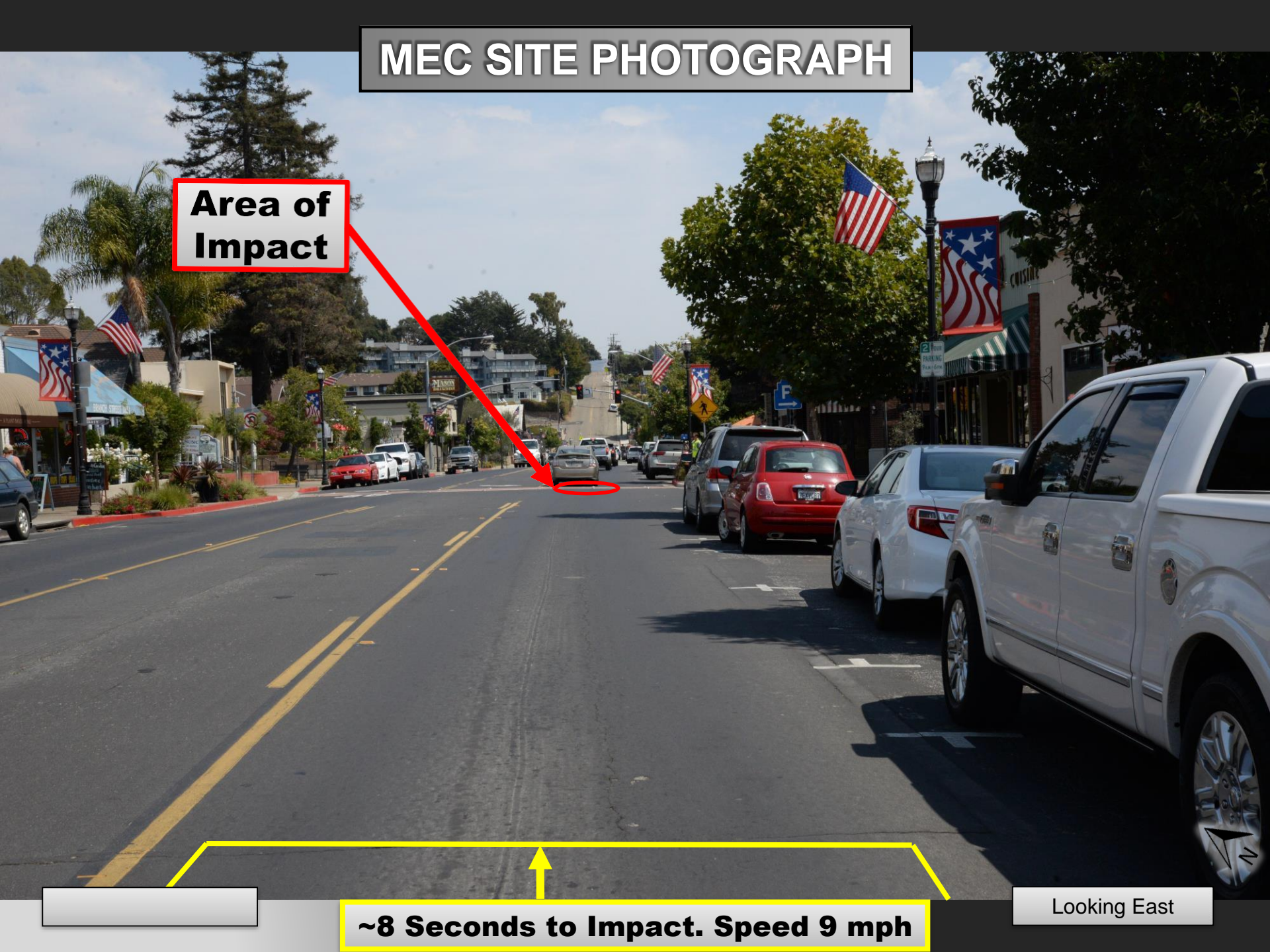
Looking East

MEC SITE PHOTOGRAPH

**Area of
Impact**

~8 Seconds to Impact. Speed 9 mph

Looking East



MEC SITE PHOTOGRAPH

**Area of
Impact**

~5 Seconds to Impact. Speed 15 mph

Looking East

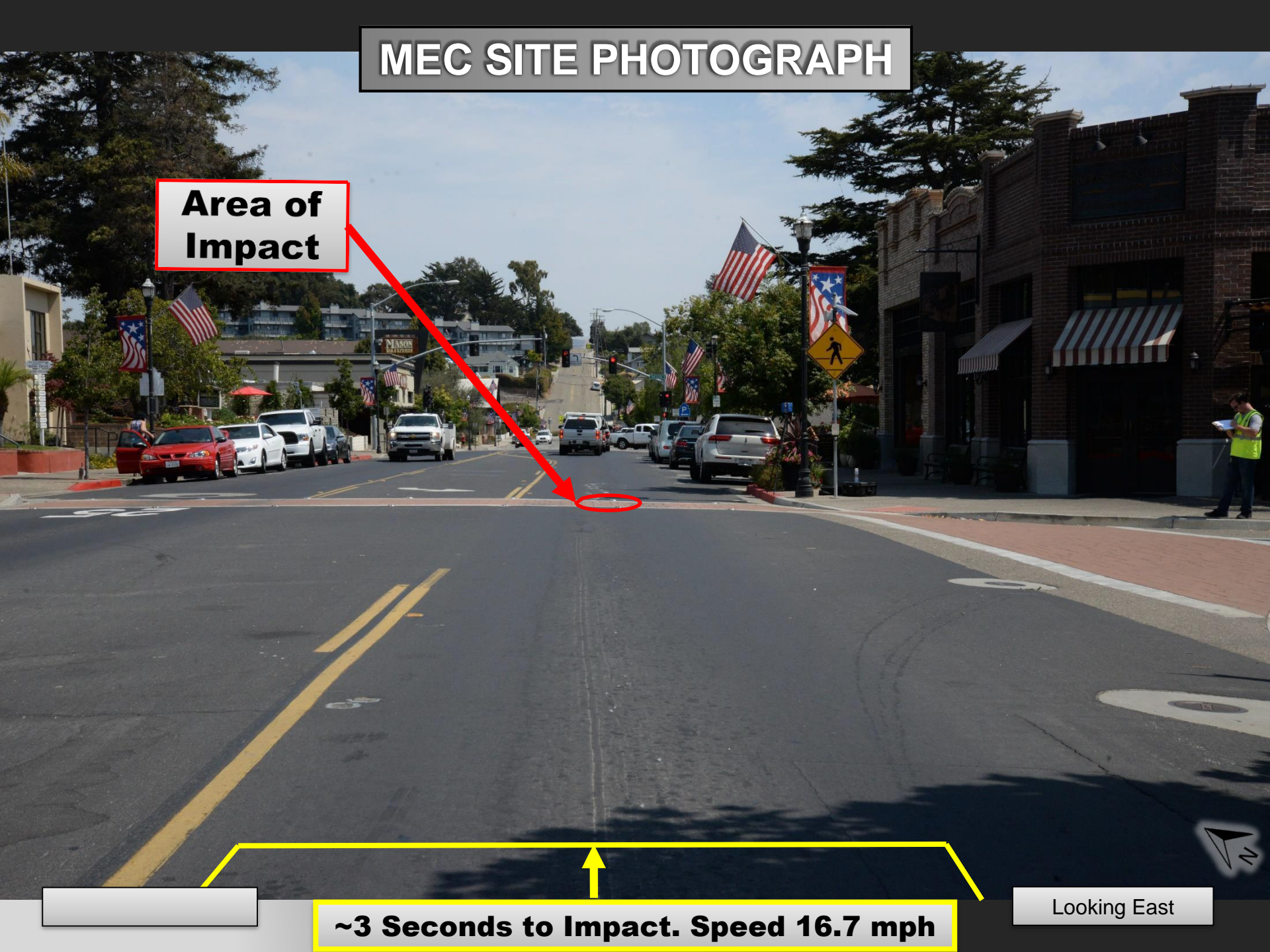


MEC SITE PHOTOGRAPH

Area of Impact

~3 Seconds to Impact. Speed 16.7 mph

Looking East



MEC SITE PHOTOGRAPH

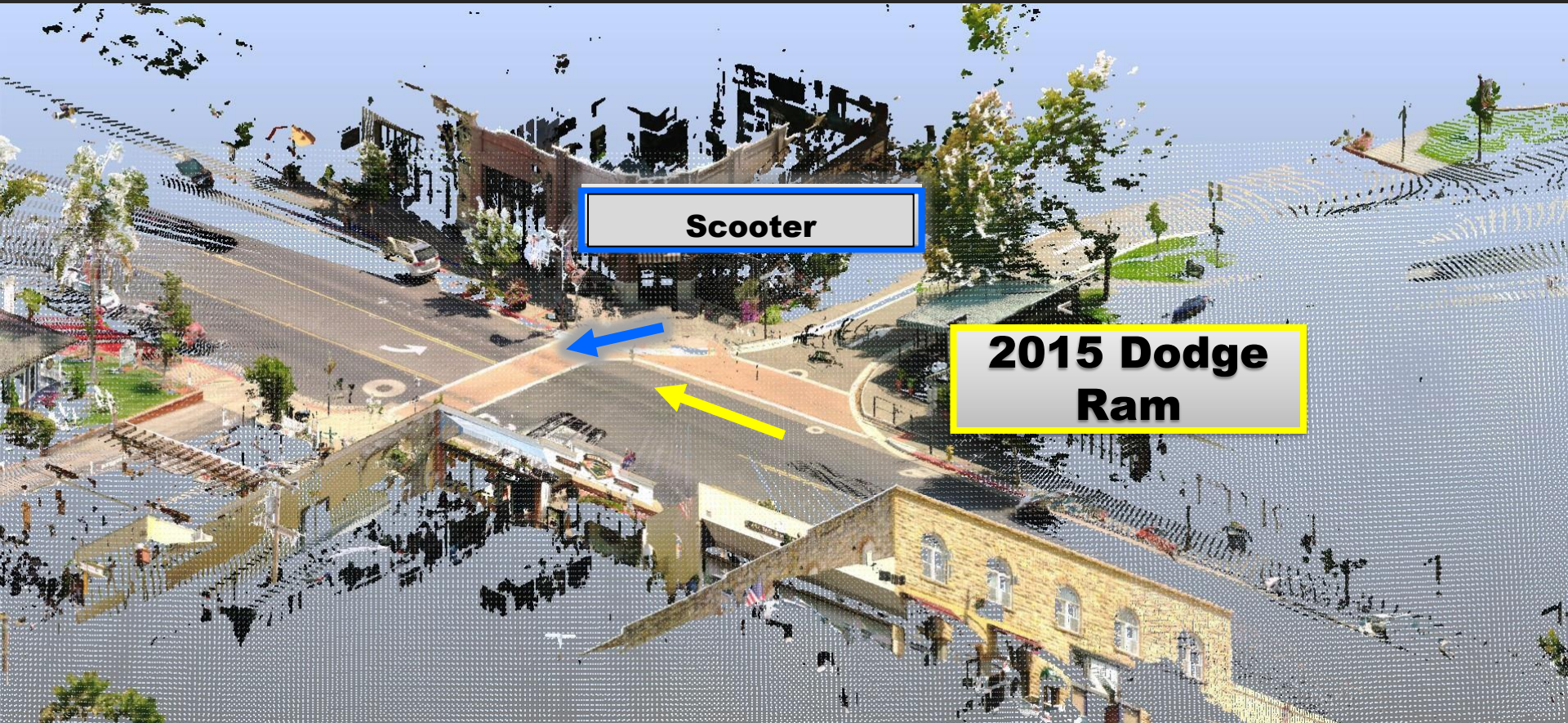
**Area of
Impact**

~2 Seconds to Impact. Speed 17 mph

Looking East



MEC SITE INSPECTION



3-D Laser Scan Data - Millions of Photo Colored Measurement Data Points



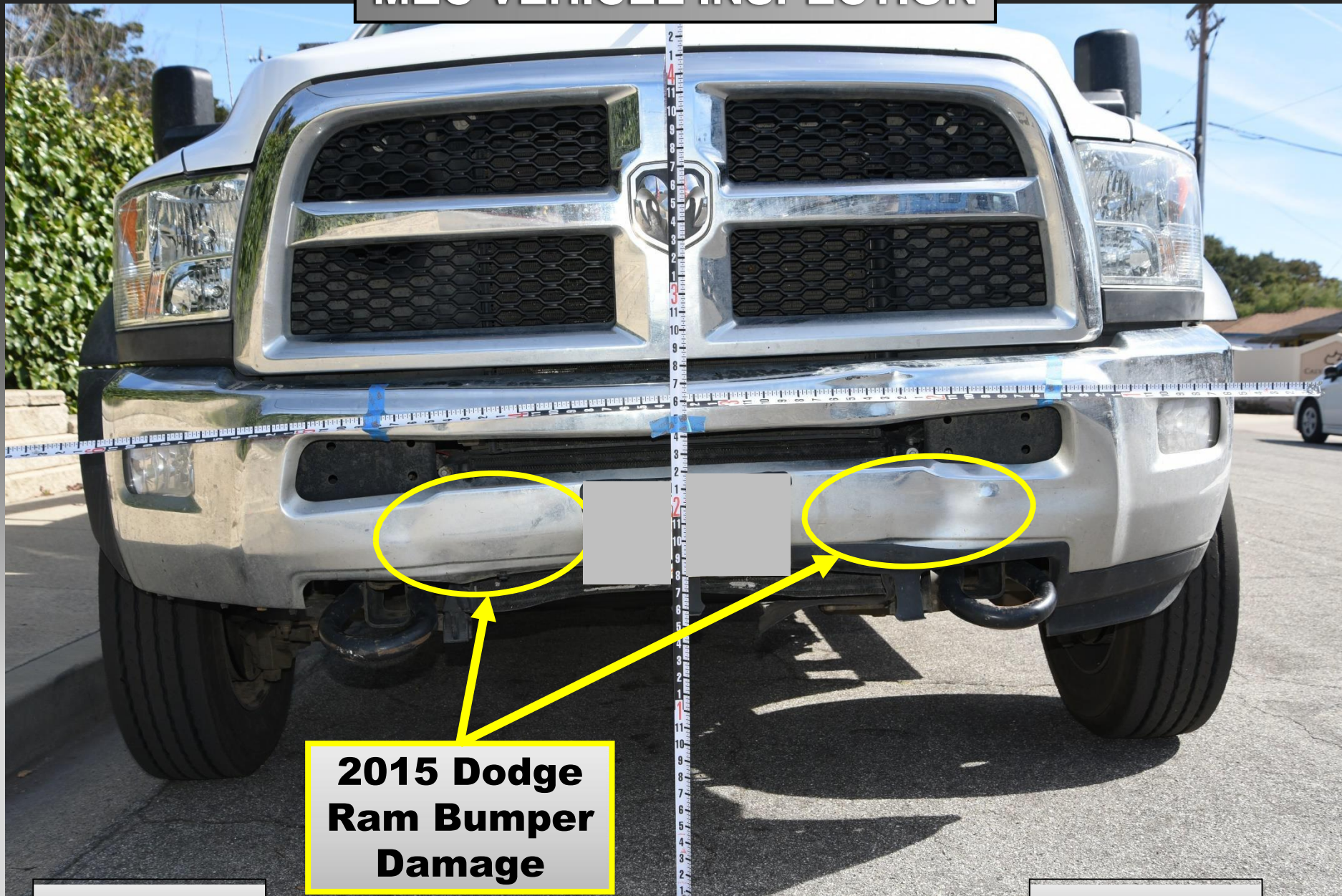
MEC VEHICLE INSPECTION



2015 Dodge Ram

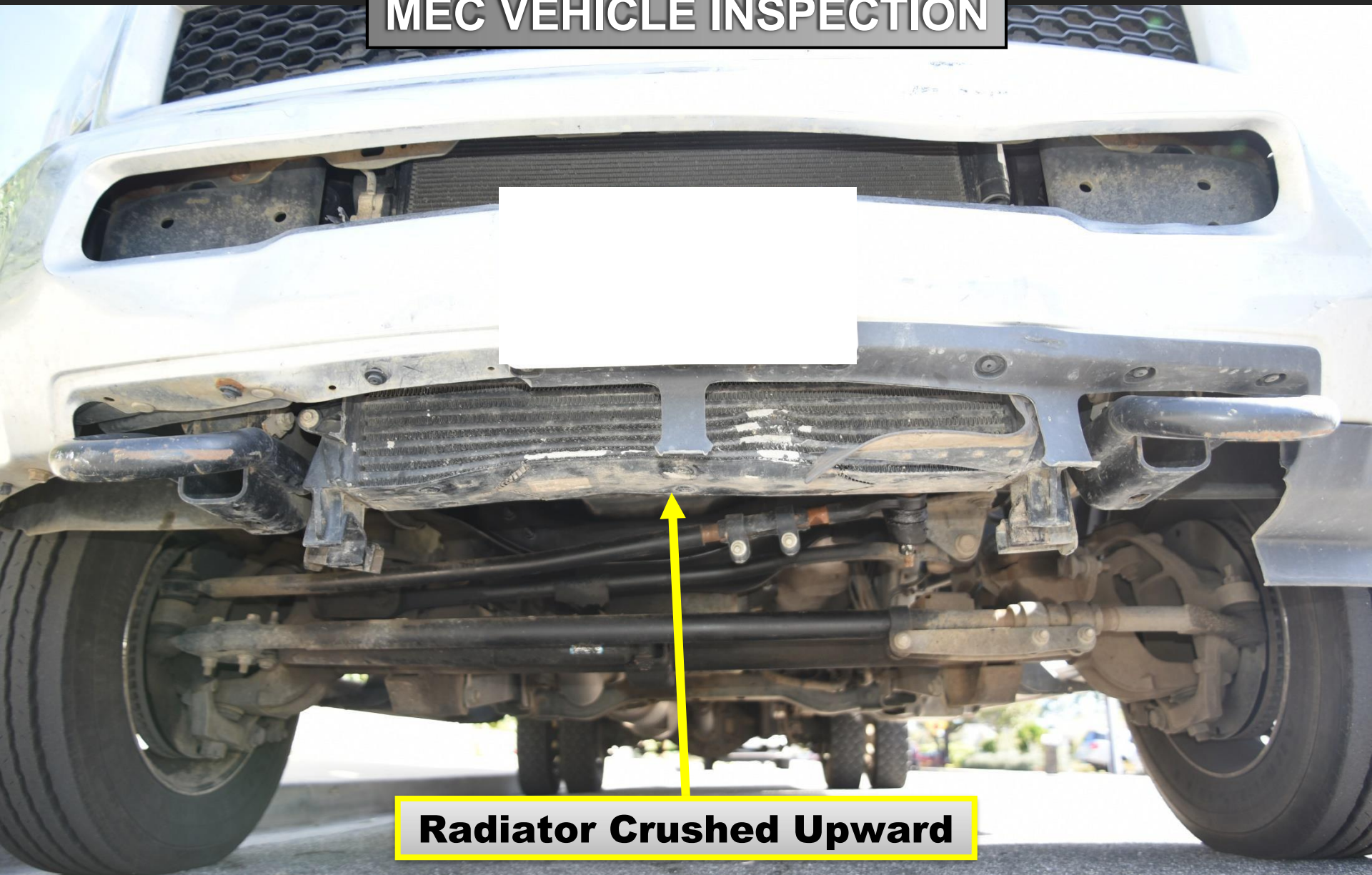
3-D Laser Scan Data - Millions of Photo Colored Measurement Data Points

MEC VEHICLE INSPECTION



**2015 Dodge
Ram Bumper
Damage**

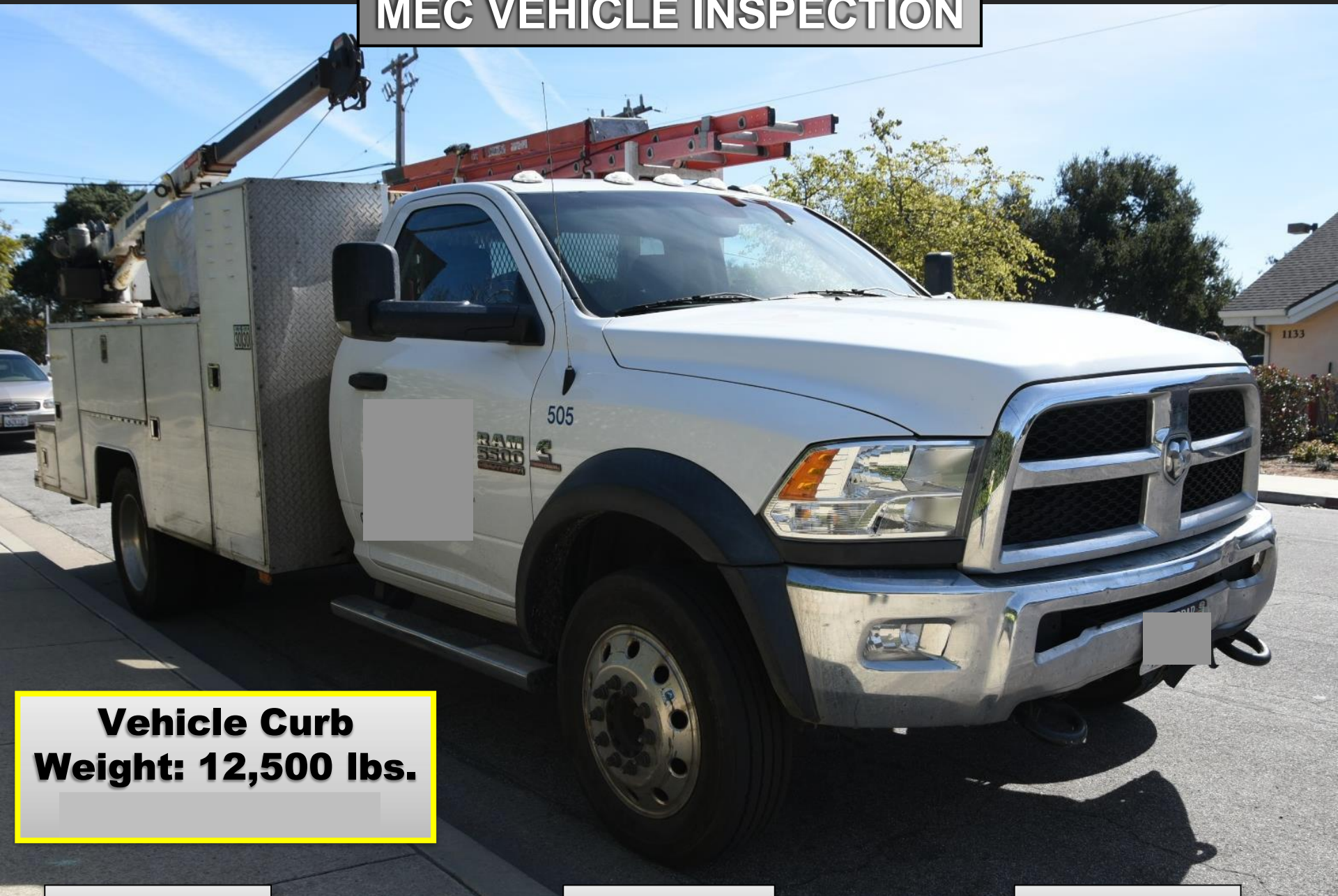
MEC VEHICLE INSPECTION



Radiator Crushed Upward

2015 Dodge Ram

MEC VEHICLE INSPECTION



**Vehicle Curb
Weight: 12,500 lbs.**

2015 Dodge Ram

MEC VEHICLE INSPECTION



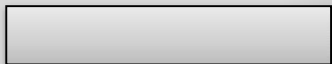
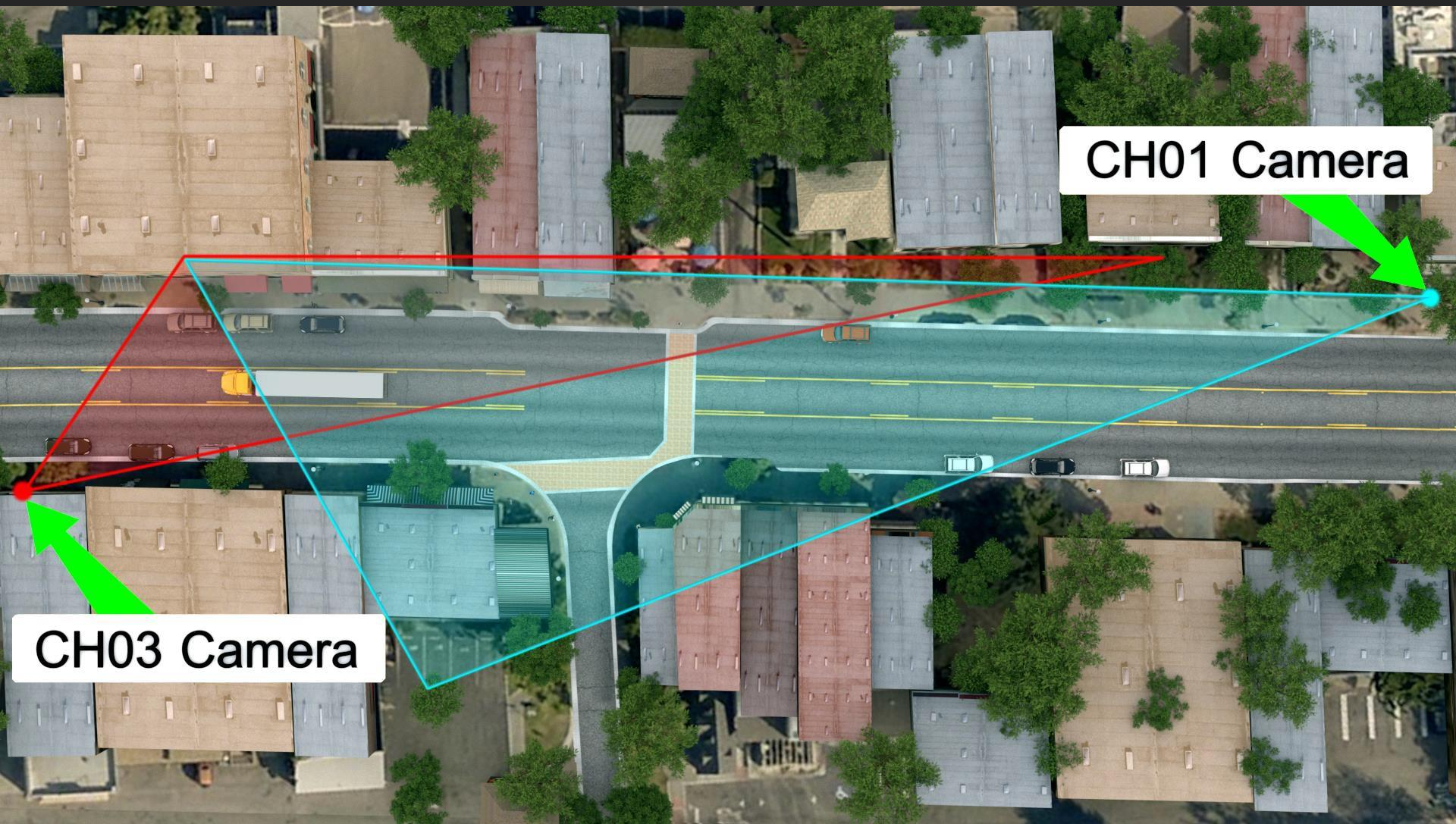
**Truck
Loaded
with Cargo**



**Vehicle Curb
Weight: 12,500 lbs.**

2015 Dodge Ram

MEC VIDEO ANALYSIS



SURVEILLANCE VIDEO

130 CA-227
Arroyo Grande, California

Google

Street View

Surveillance Video -
CH03 Camera



Looking East

SURVEILLANCE VIDEO

Surveillance Video -
CH03 Camera



CH 03

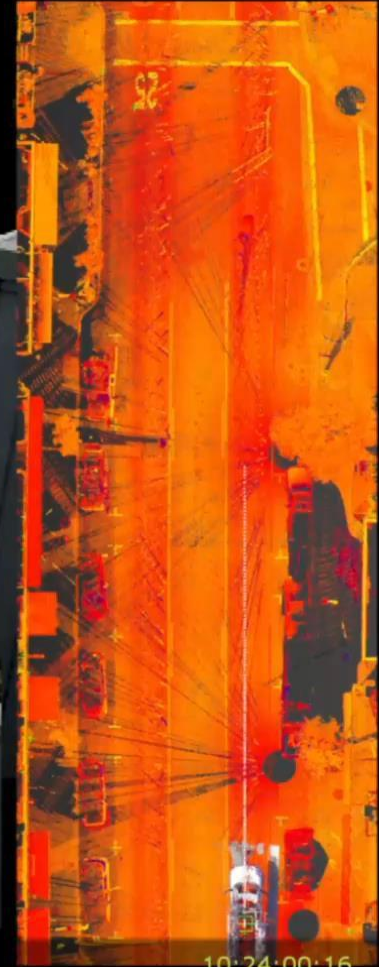
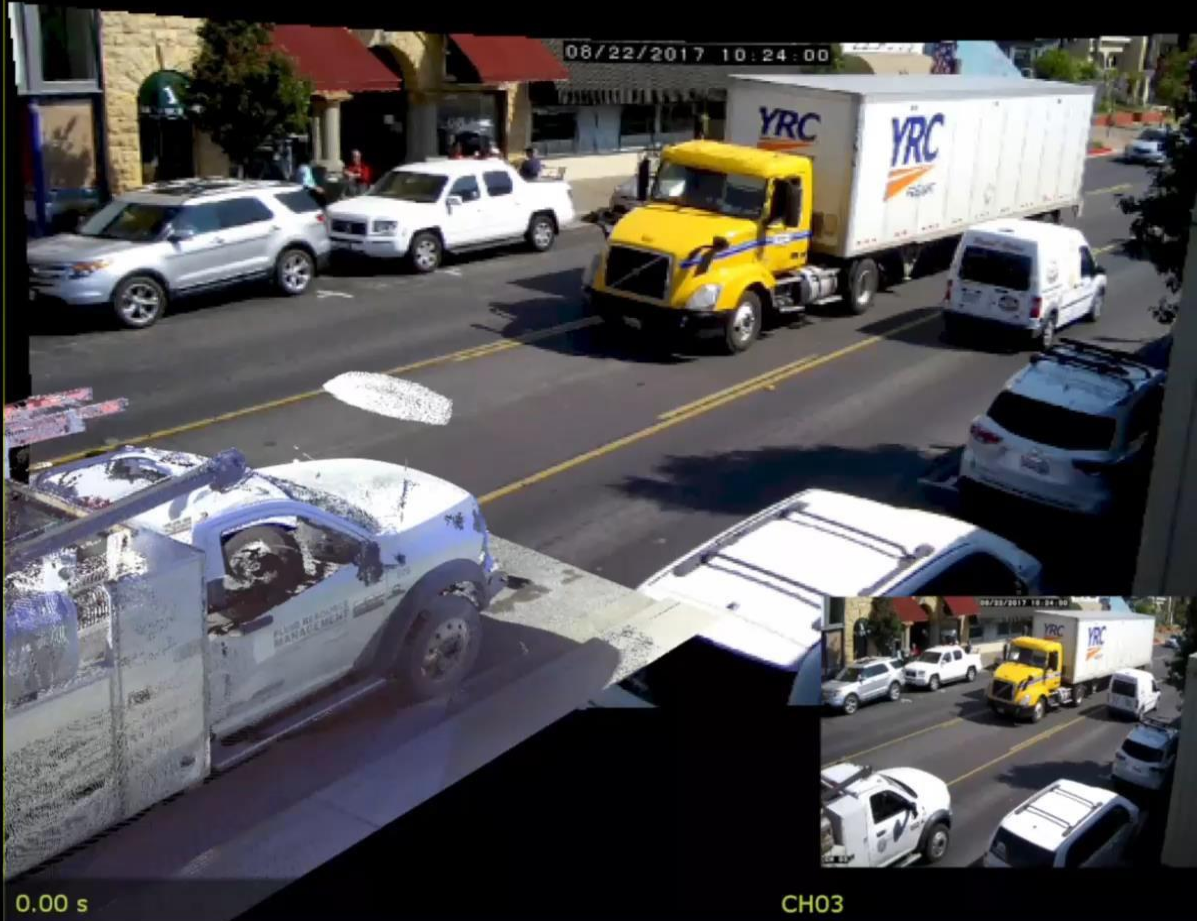
Looking East

MEC VIDEO ANALYSIS

40 40

170350

SPD: 9.5 Mile/h



10:24:00:16

Video Analysis - Dodge Ram Speed

Looking East

ACCIDENT VIDEO

Accident Video - CH01 Camera



CH 01

Looking West

2015 Dodge Ram

13.2 mph

PC-CRASH SIMULATION

T = -5 s

Motorized Scooter

0.2 mph

**Transit
Van**

E Branch St.

**2015 Dodge
Ram**



MOMENTUM

Case #H70350

Genova v. Johnson

D.O.I. - 08/22/2017

Motorized Scooter - Begins to Accelerate

2015 Dodge Ram

15.73 mph

PC-CRASH SIMULATION

T = -4 s

Motorized Scooter

1.2 mph

**Transit
Van**

E Branch St.

**2015 Dodge
Ram**

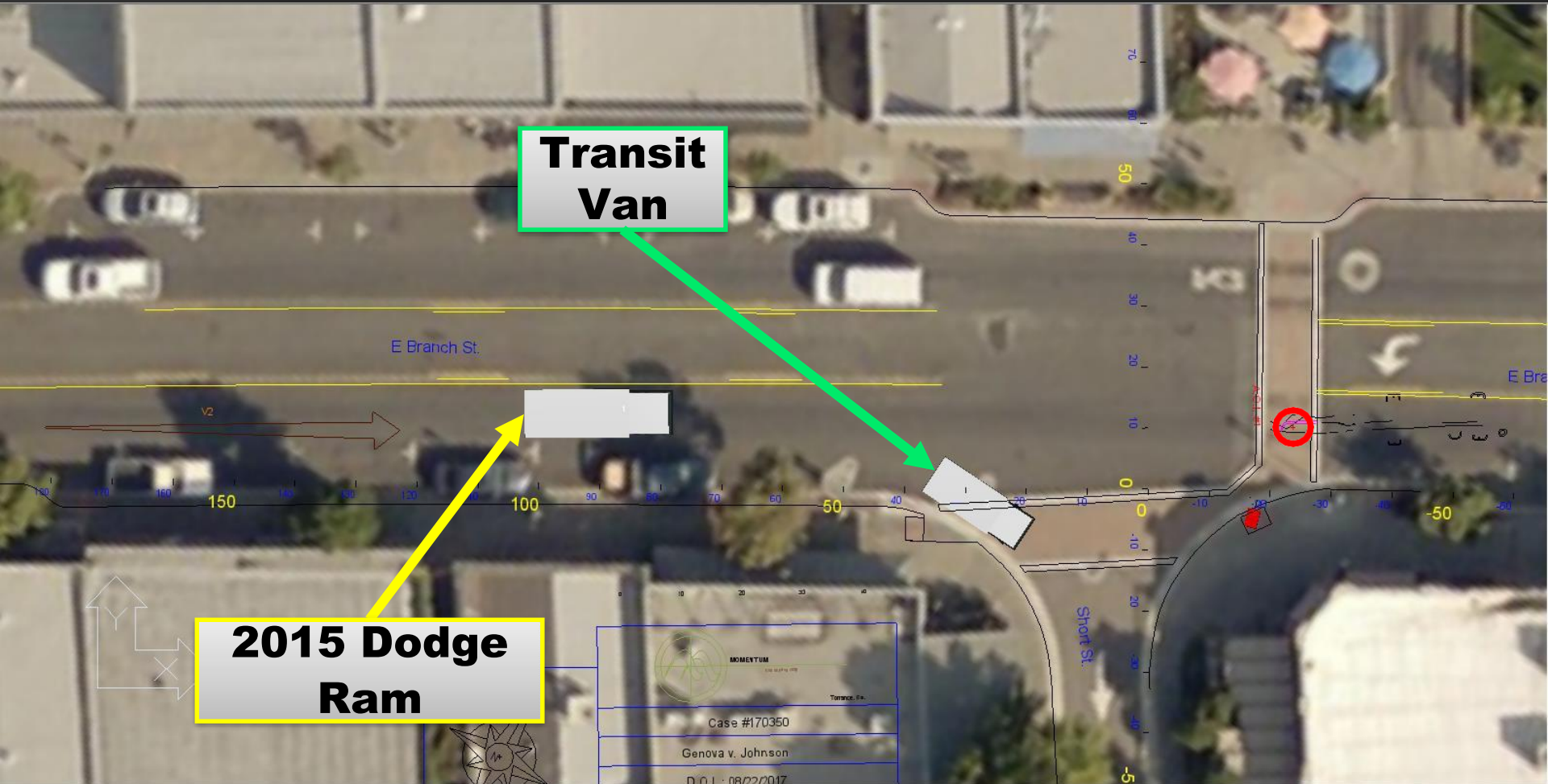


Case #170350

Genova v. Johnson

D.O.I. - 08/22/2017

Motorized Scooter - Steer's Right



2015 Dodge Ram

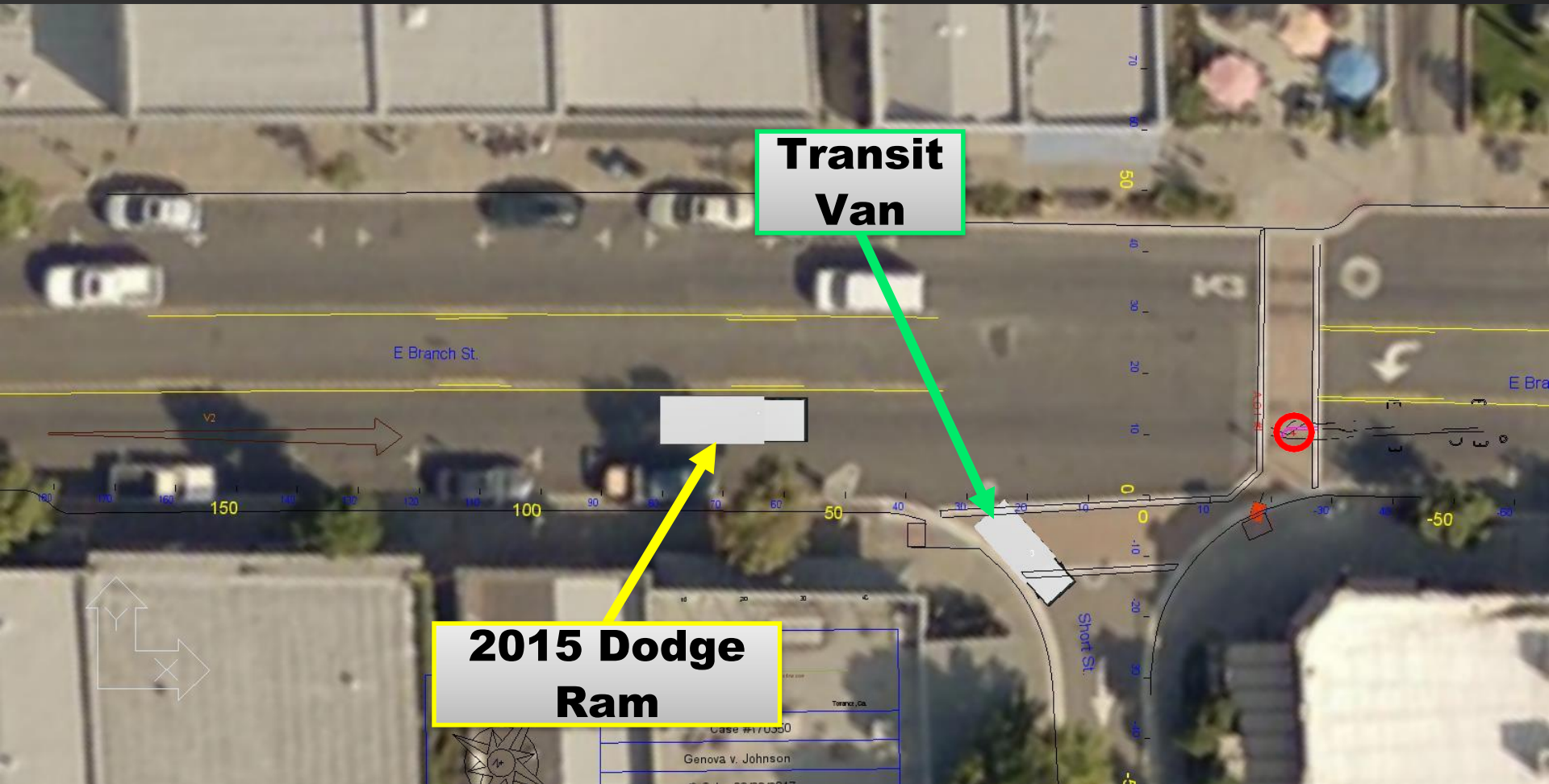
16.7 mph

PC-CRASH SIMULATION

T = -3 s

Motorized Scooter

2.2 mph



2015 Dodge Ram

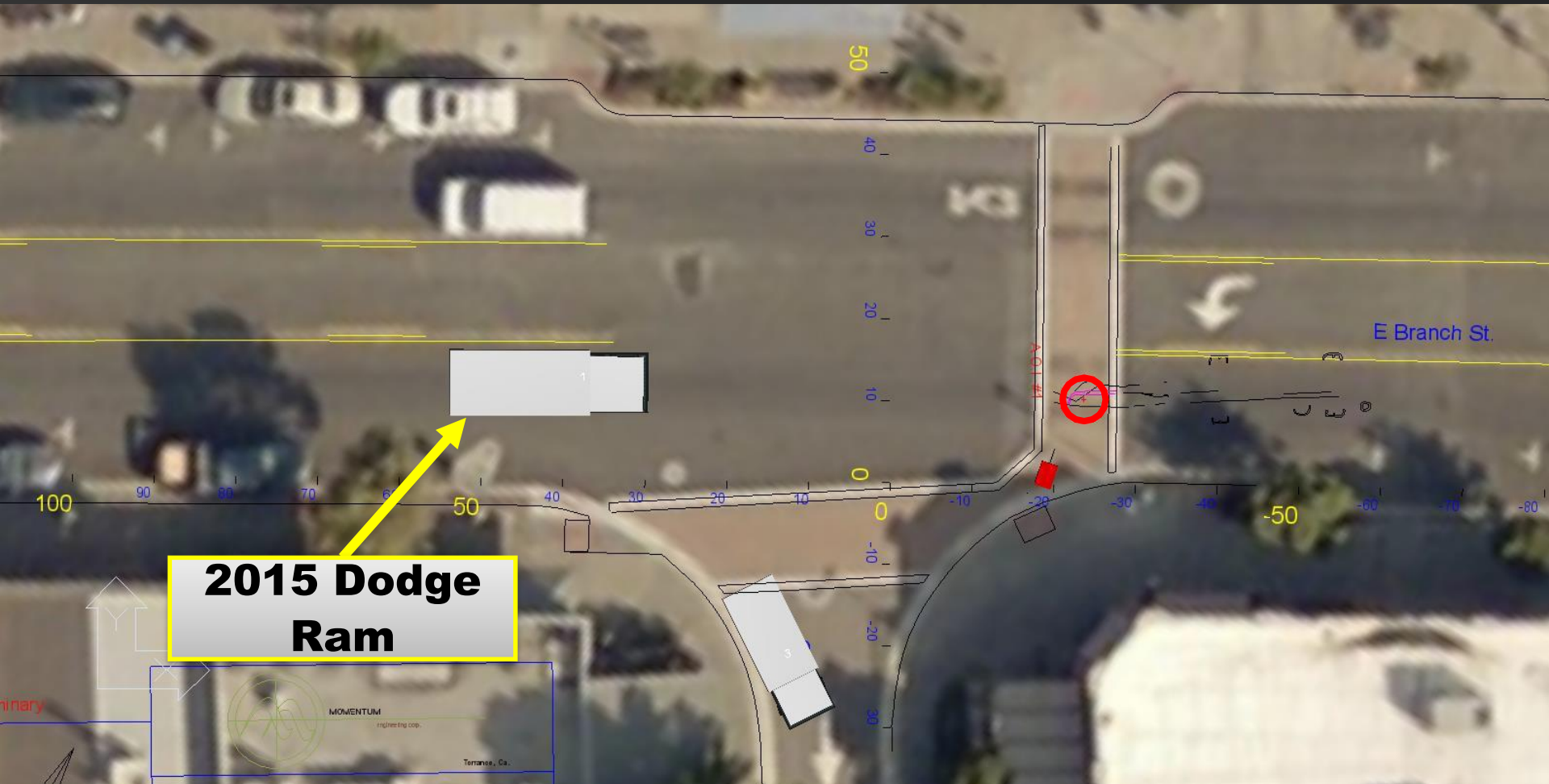
17 mph

PC-CRASH SIMULATION

T = -2 s

Motorized Scooter

2.7 mph



Motorized Scooter - Steer's Left

2015 Dodge Ram

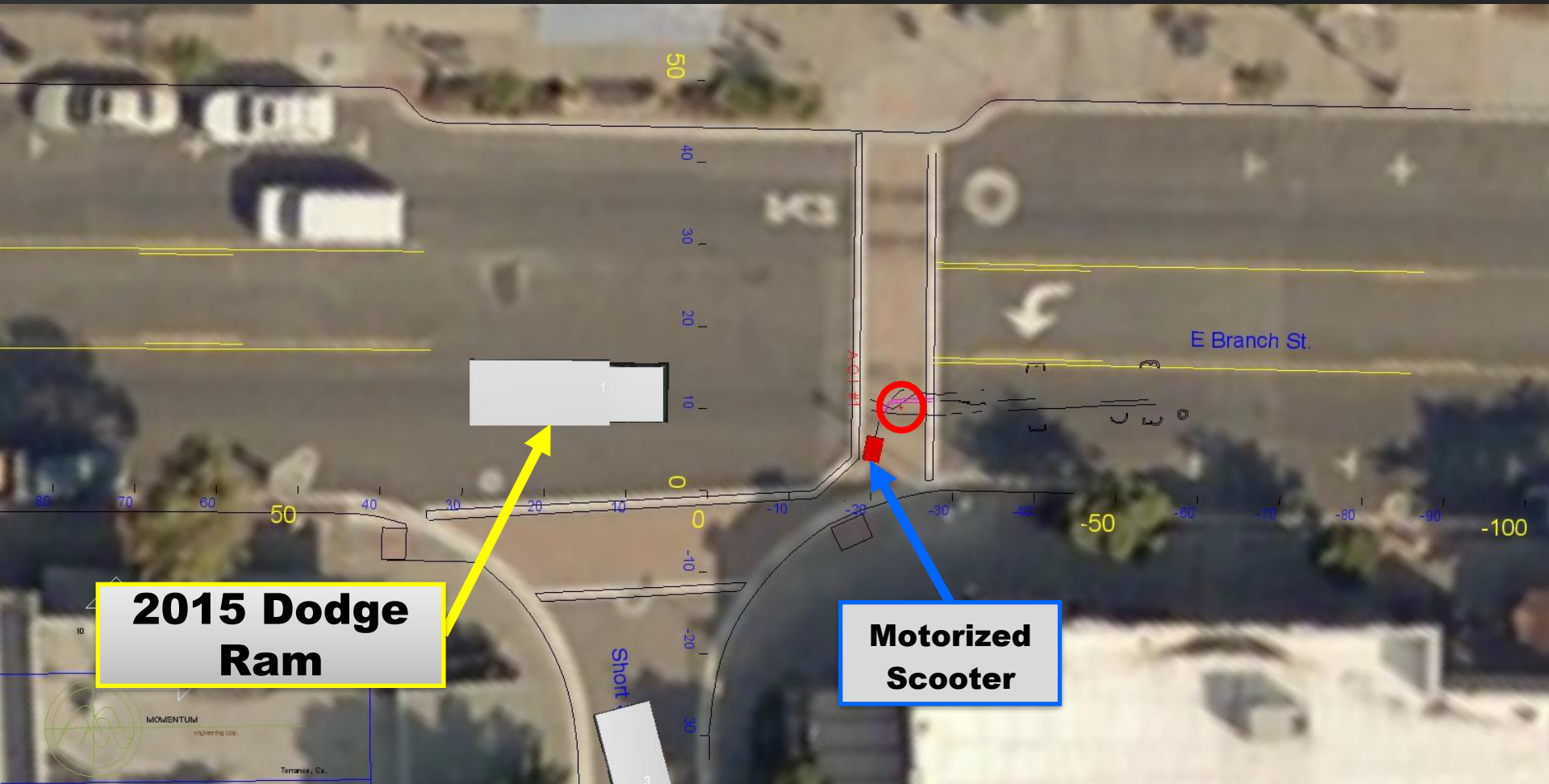
17 mph

PC-CRASH SIMULATION

T = -1 s

Motorized Scooter

3.1 mph



2015 Dodge Ram

17 mph

$\Delta V \sim 1-2$ mph

PC-CRASH SIMULATION

$T = 0$ s

Impact

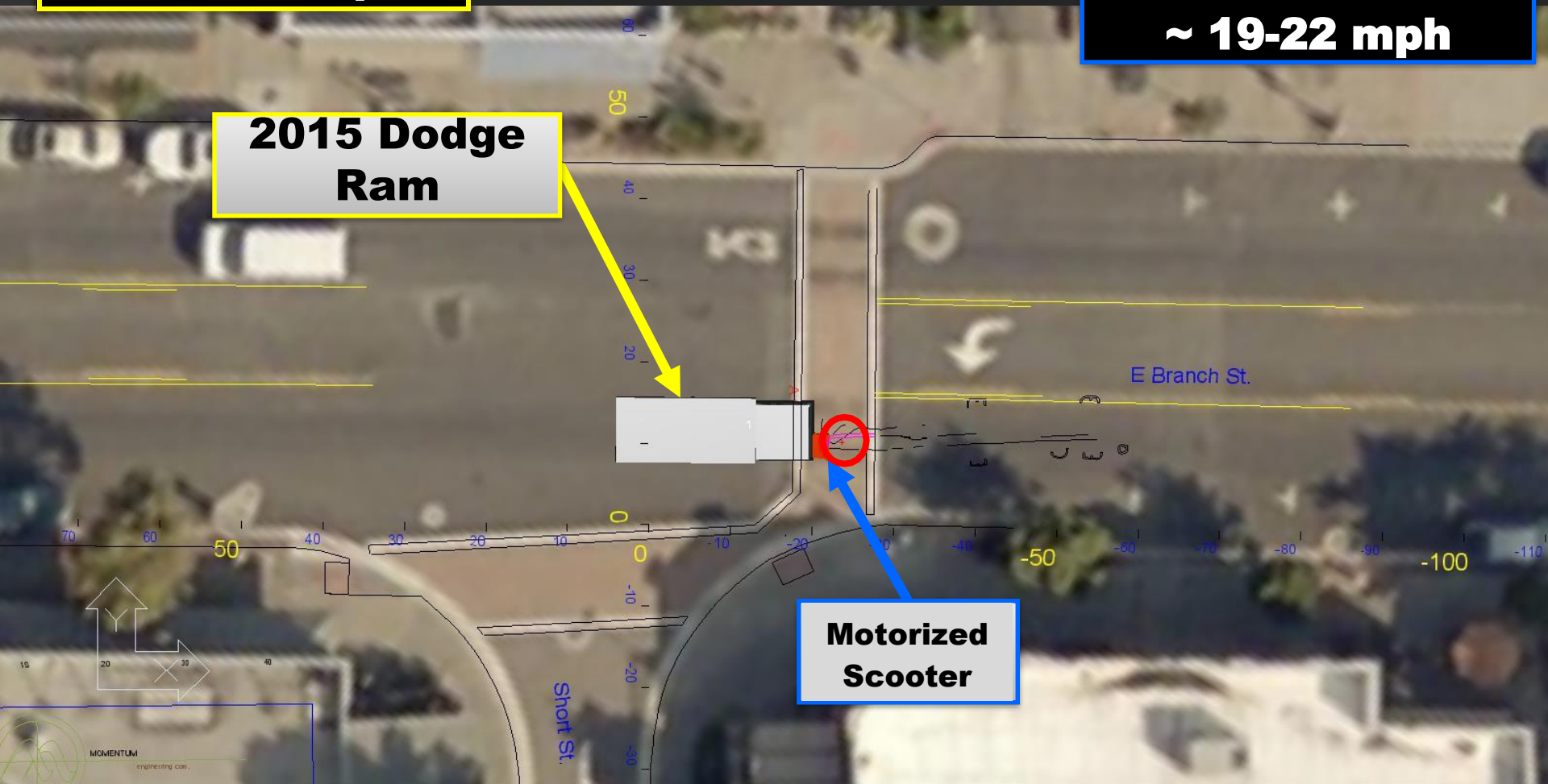
Motorized Scooter

3.3 mph

**Cumulative ΔV
 $\sim 19-22$ mph**

**2015 Dodge
Ram**

**Motorized
Scooter**



2015 Dodge Ram

0 mph

PC-CRASH SIMULATION

T = 15.0 s

End Simulation

Motorized Scooter

0 mph

